



Current research information systems





Agenda

- What is a CRIS?
- A brief history of CERIF and euroCRIS
- CRIS at St Andrews
- CERIF & CRIS in the UK



What is a CRIS?

“a Current Research Information System, commonly known as "CRIS", is any information tool dedicated to provide access to and disseminate research information” (www.eurocris.org)

A CRIS consists of

- a datamodel describing objects of interest to R&D
- a tool or set of tools to manage the data



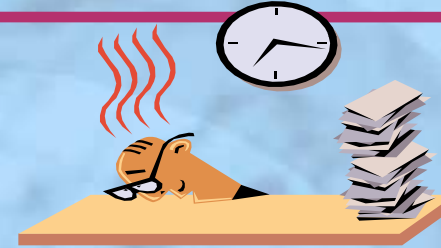
Who needs it and why?

- o political decision-makers
- o funding organisations
- o research institutions
- o individual researchers
- o entrepreneurs and innovators
- o media and general public

REF



The pain of RAE 2008



*REF will require at least as much data collection
by Universities*

**RAE/REF determines a third of
research income in UK > £1.5
billion**





Agenda

- What is a CRIS?
- A brief history of CERIF and euroCRIS
- CRIS at St Andrews
- CERIF & CRIS in the UK



CERIF & euroCRIS

CERIF 2006 / 2008 Model

Similar Ideas
UN/UNESCO
OECD
CODATA

EU Working Group on Research Databases Workshop

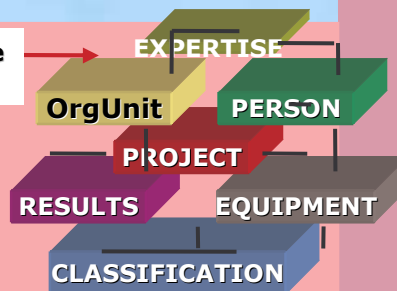
PROJECT

Acronym: ERGO
Participant:
Keith Jeffery, Anne Asserson, many more
Organisations:
Rutherford Appleton, University of Bergen, ...

- Networking of DBs
- Exchange of Records
- Recommendation to Member States

CERIF 91

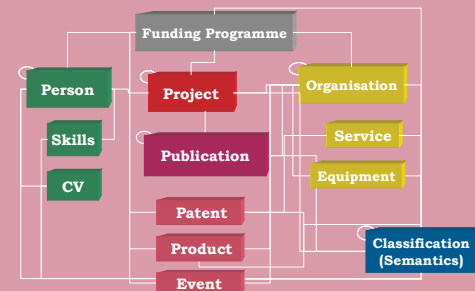
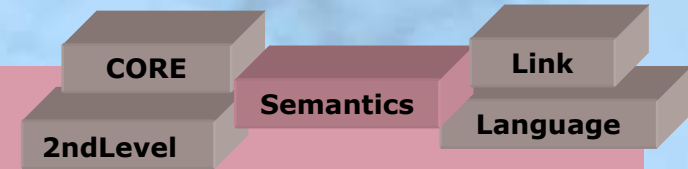
Roles



- Data Model (RDBMS, OO, IR)
- Multilinguality
- Controlled Vocabulary
- Roles / Types
- User-driven

- EC Recommendation to Member States

CERIF 2000 Model



- Data Model (RDBMS, OO, IR)
- Model Normalization
 - Robust Structure
 - Extensible Structure
 - Consistent Structure
 - Semantic Layer
- XML Exchange Specification
- Elaboration on Publication
- (Core) CERIF Semantics

euroCRIS
Current Research Information Systems

1987

1991

2000

2006

2008



CERIF & euroCRIS

- CERIF is an EU Recommendation to Member States
<http://cordis.europa.eu/cerif/>
- The European Commission (EC) has authorised euroCRIS to maintain and develop CERIF and its usage

<http://www.eurocris.org/Index.php?page=CERIFreleases&t=1>



CERIF Entities

CERIF Entity Types

Core Entities

Result Entities

2nd Level Entities

Link Entities

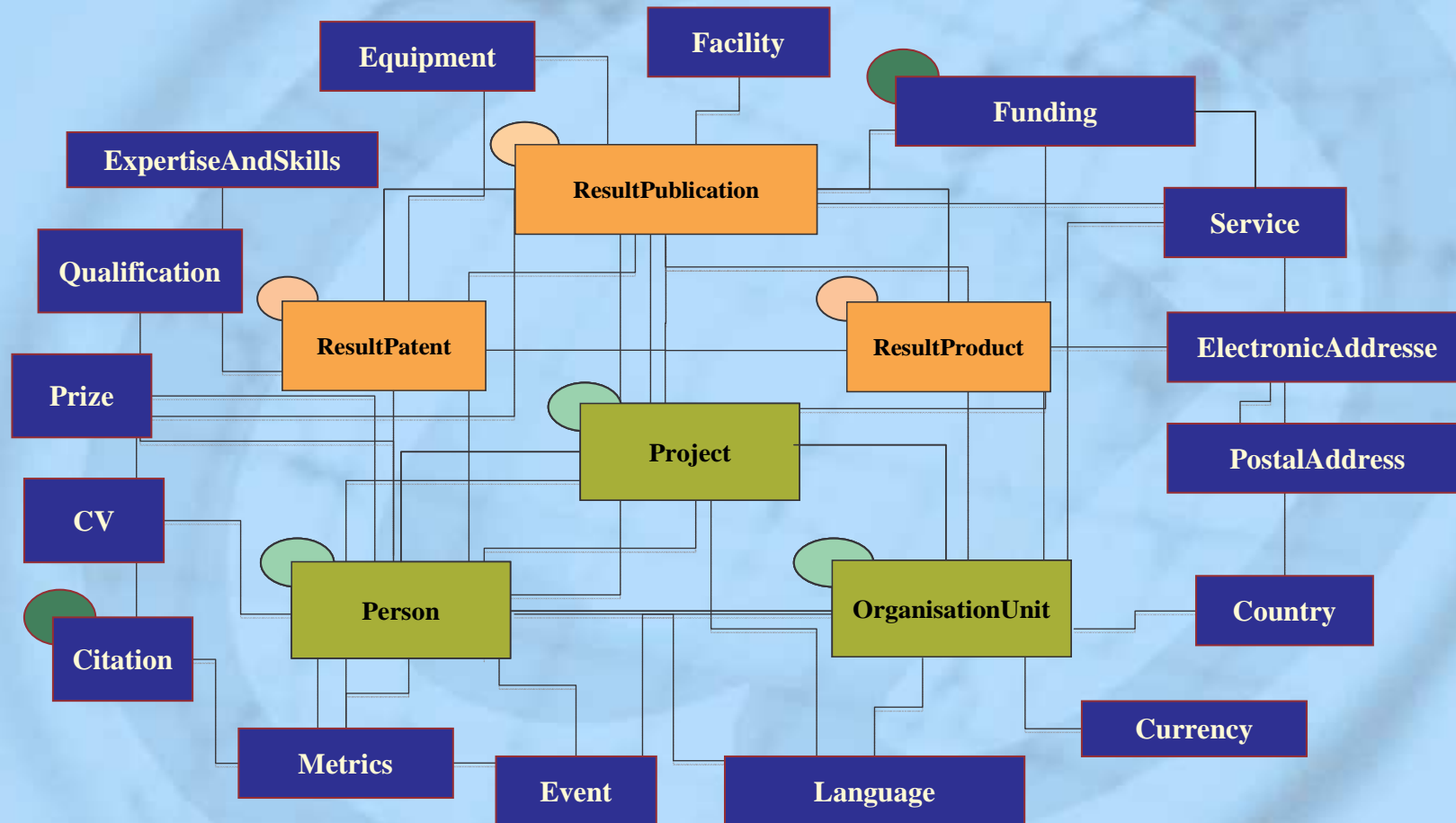
CERIF Features

Multiple Language

Semantics



CERIF entities





Linkages From CERIF

- CERIF does not only provide strong, role-typed, timestamped within-links
- But also provides the facility for strong, role-typed, timestamped **outward**-links

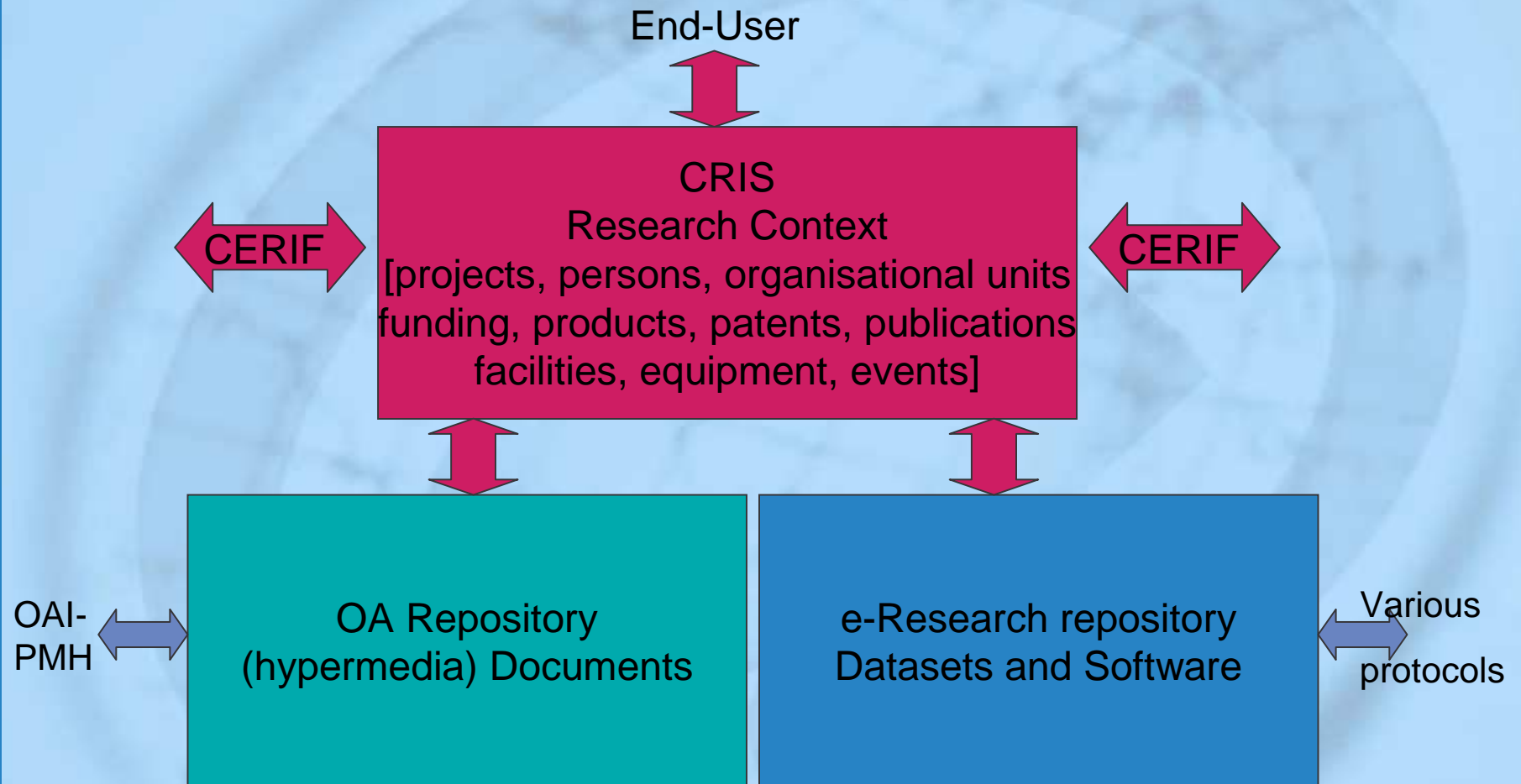


Linkages From CERIF

- publication X full-text (or multimedia) is not stored within the CERIF data model but in an institutional repository or publisher's online database. CERIF provides the direct linkage to the full text.



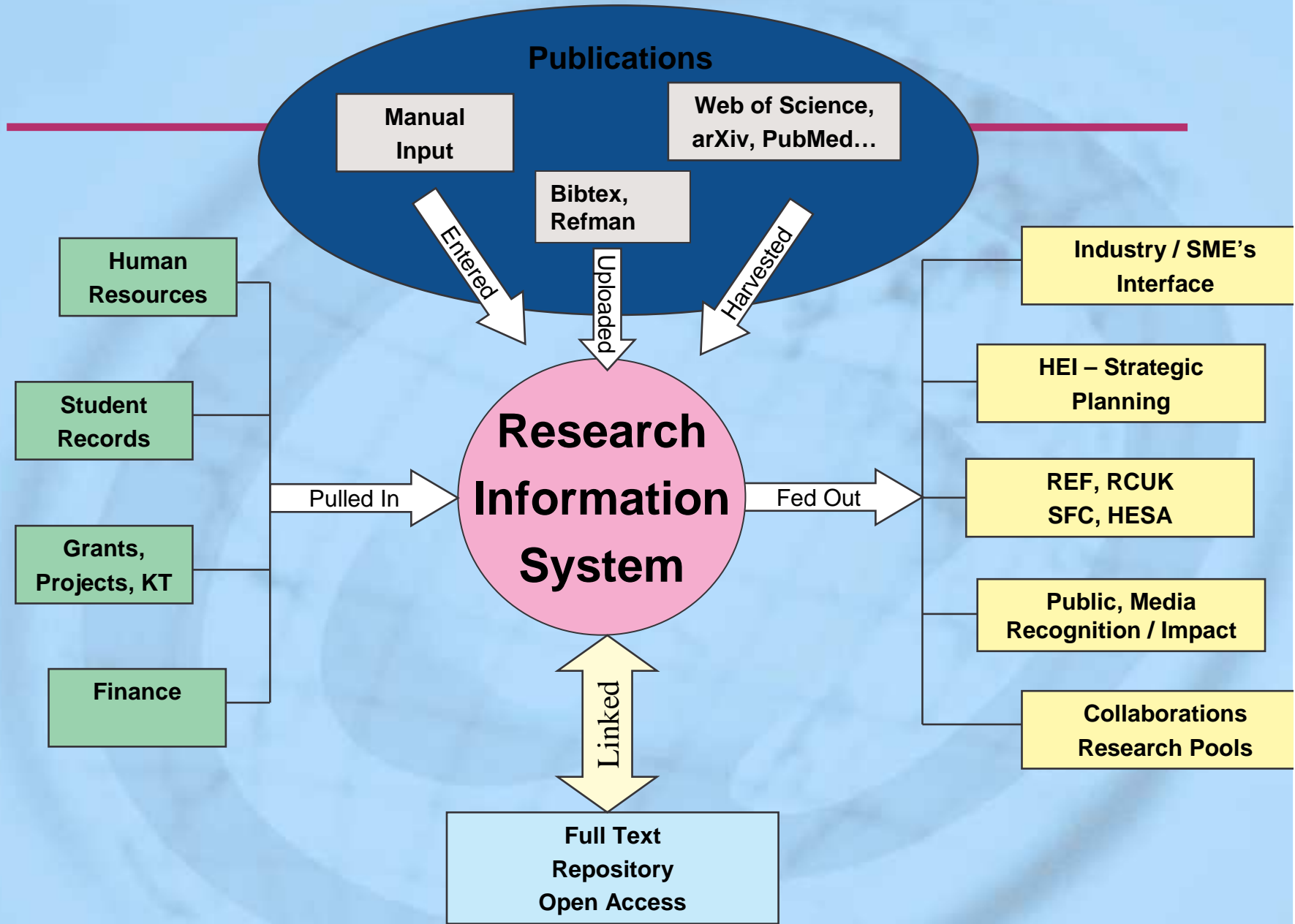
CRIS + Repositories





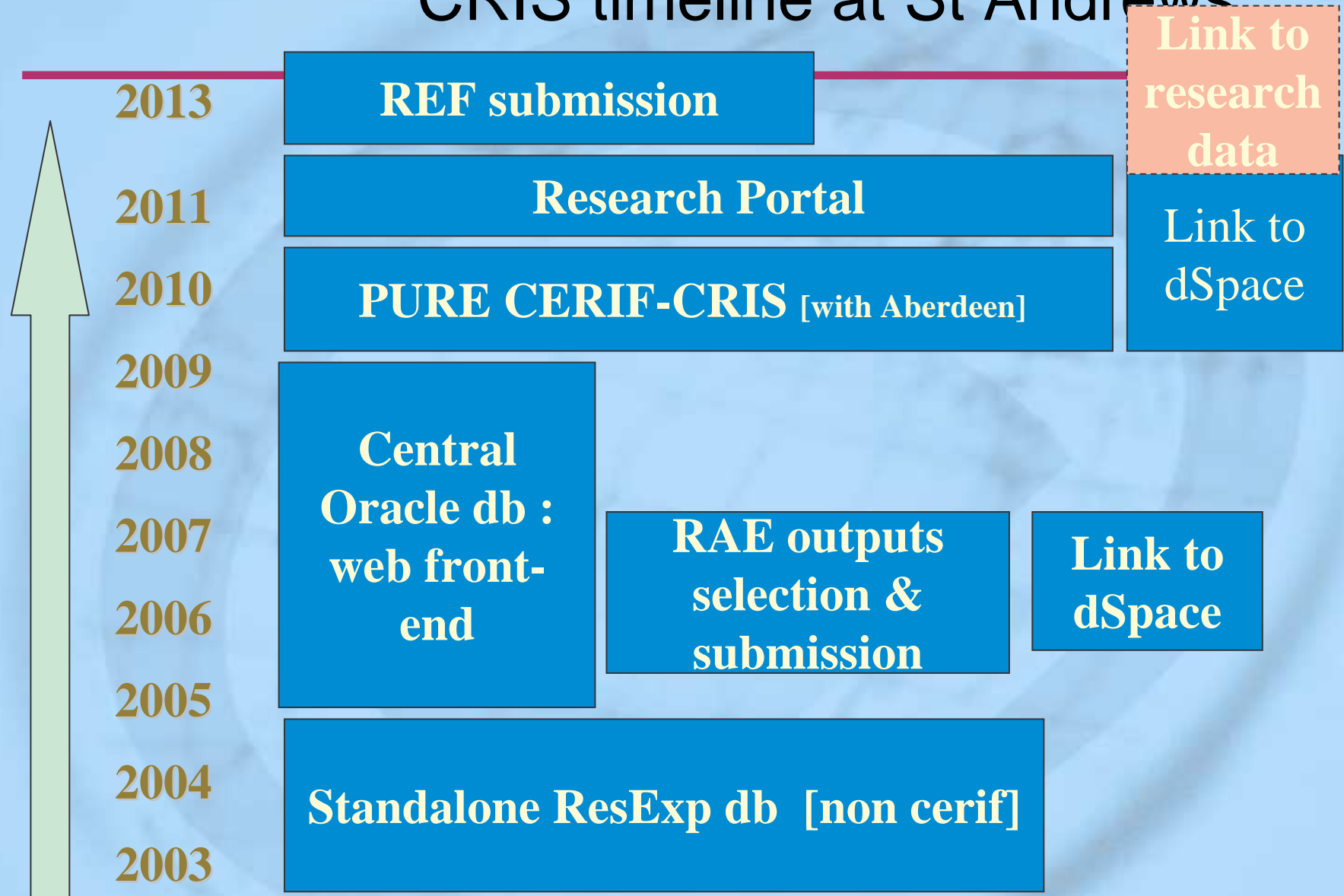
Agenda

- What is a CRIS?
- A brief history of CERIF and euroCRIS
- **CRIS at St Andrews**
- CERIF & CRIS in the UK



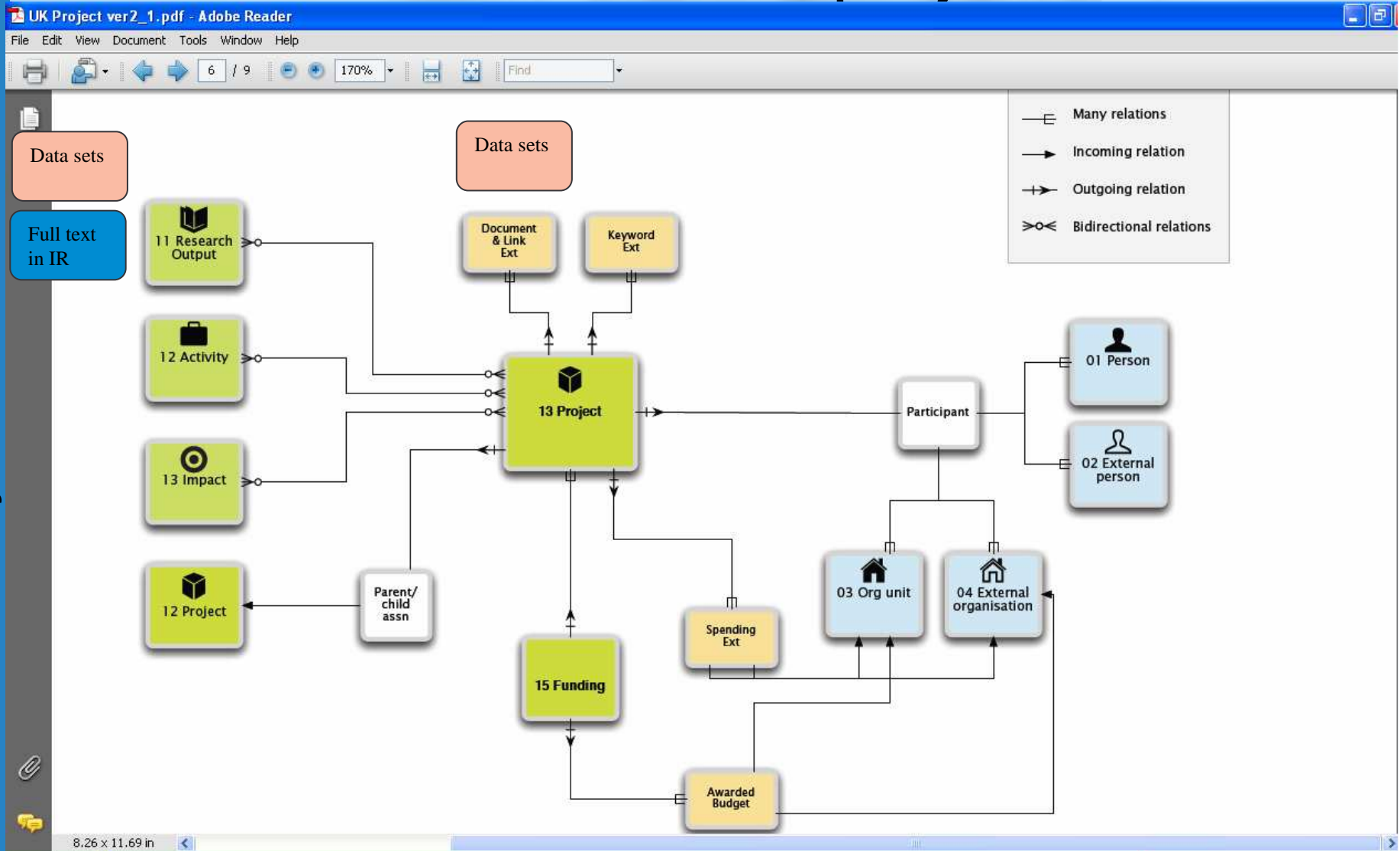


CRIS timeline at St Andrews





Pure project model





The team



REF

Data



Open Access





Agenda

- What is a CRIS?
- A brief history of CERIF and euroCRIS
- CRIS at St Andrews
- **CERIF & CRIS in the UK**



CERIF

The use today .. and tomorrow ...

- Examples in Norway, Denmark, Ireland, the Netherlands
- <http://www.narcis.nl/>
- And the UK ?
- <http://www.ukoln.ac.uk/rim/>

‘Universities rely on accurate and reliable research information to support strategic planning, manage the research process and improve reporting to external bodies such as funders.’



Current research information systems



Thank you!

akc@st-andrews.ac.uk

www.st-andrews.ac.uk/research

www.ukoln.ac.uk/rim

www.eurocris.org