

# CRIS, Research Data and Institutional Reporting

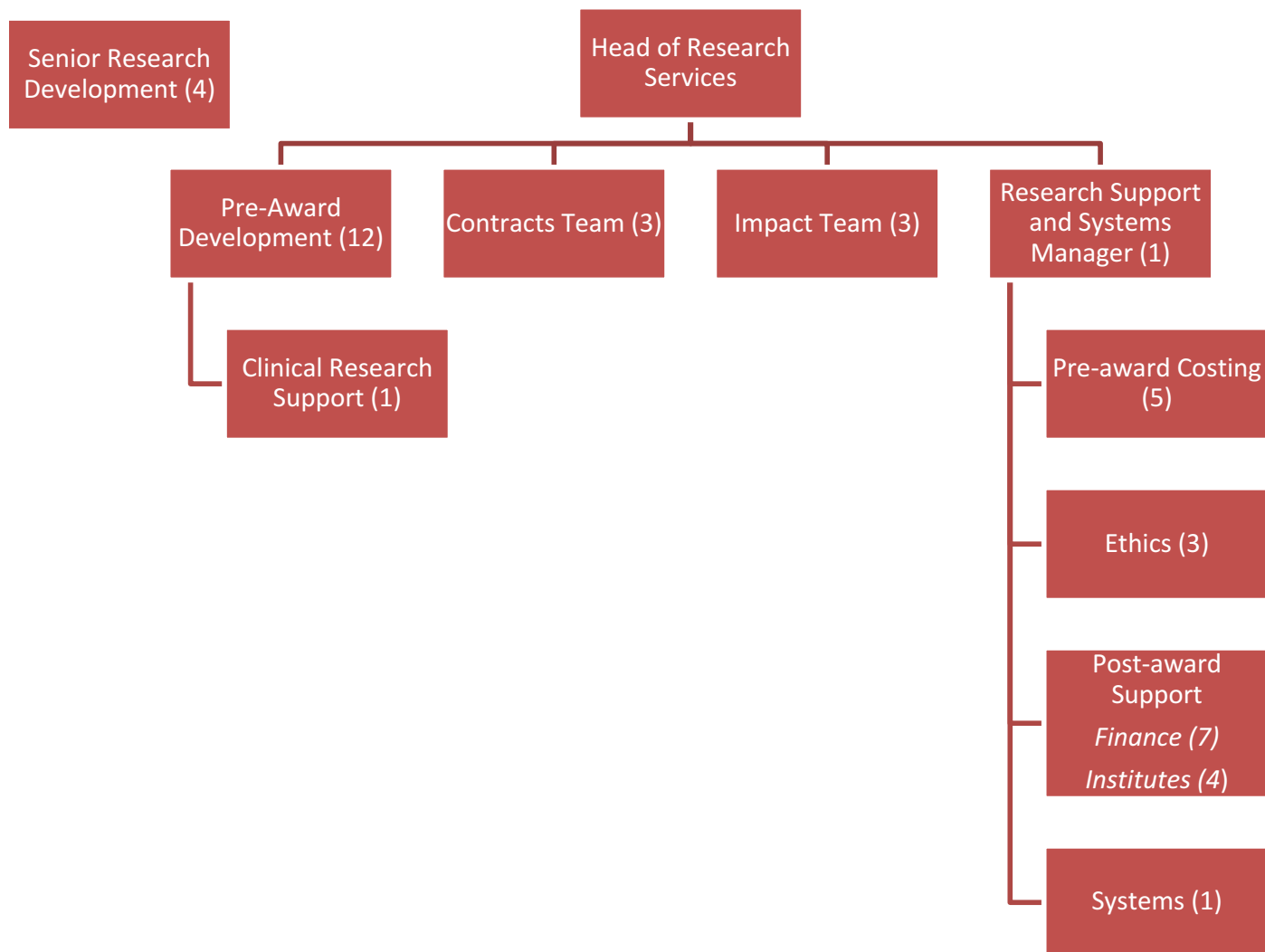
21 November 2017

Becky Gordon, Lancaster University



# Research Services

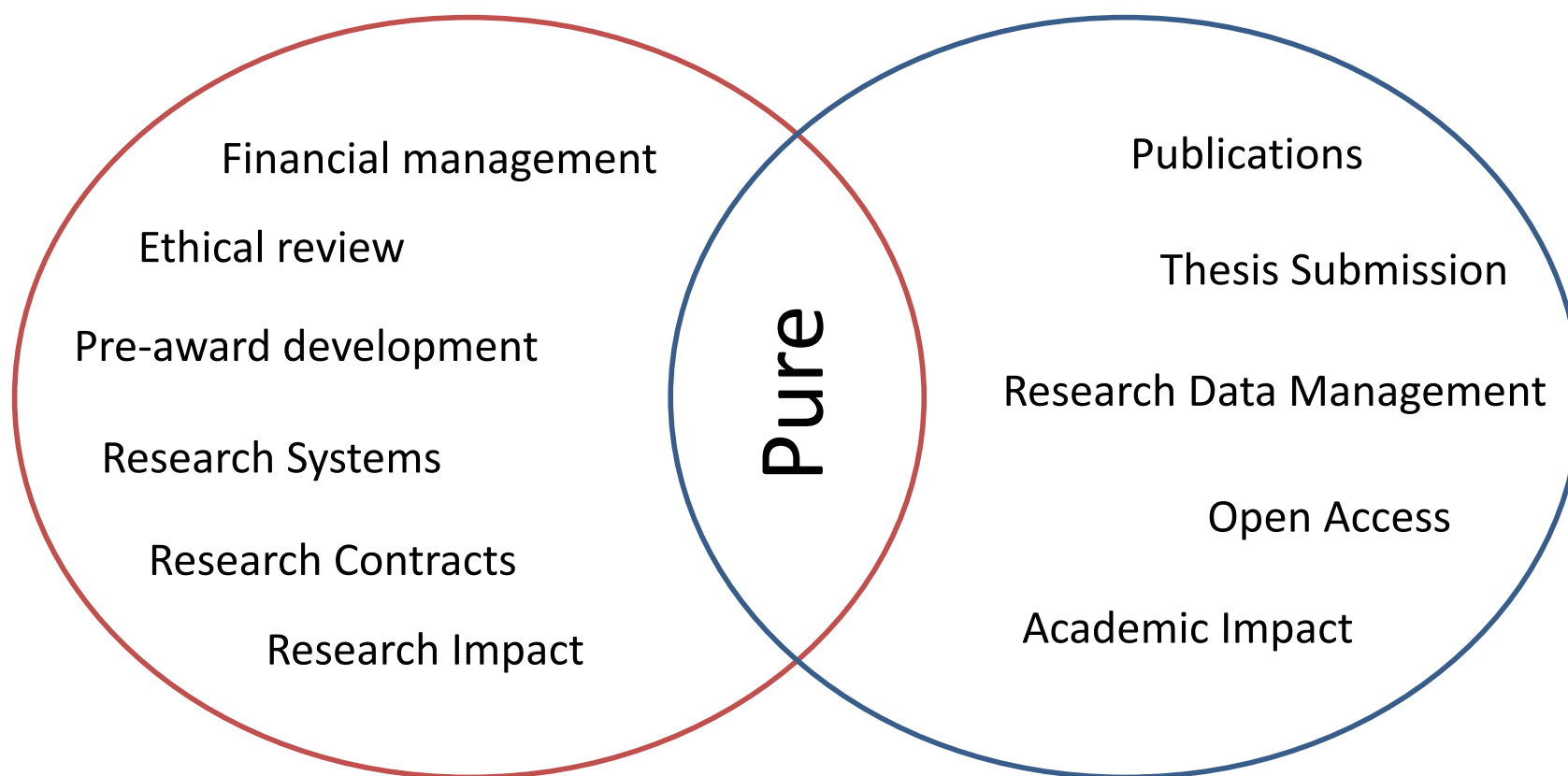
[www.lancaster.ac.uk/research](http://www.lancaster.ac.uk/research)



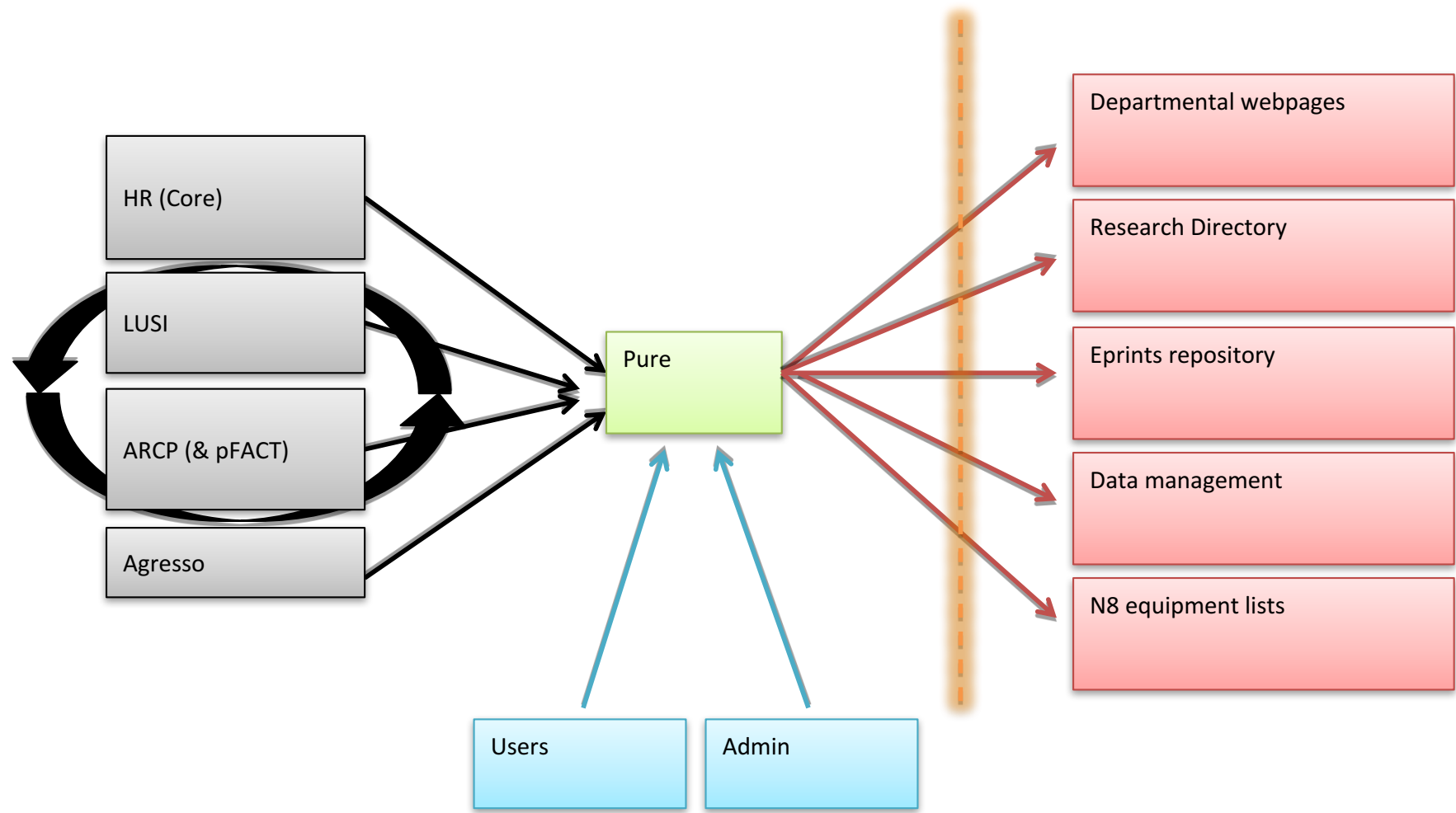
# Library – Research Support

[www.lancaster.ac.uk/library/rdm](http://www.lancaster.ac.uk/library/rdm)

---



# Lancaster Systems



# Lancaster Reporting

---

- Financial
  - Monthly, Annually
- Organisational unit performance
  - Faculty, Department, Institute, Research Centre
- Individual performance
  - Promotions, PDR
- External requirements
  - Open Access, REF, HESA, ResearchFish

# Strategic Research Management Tool

---

- Replace time consuming reports (time = money!)
- “Live” data view
- Central place to view different types of performance
  
- Joint project between Information System Services and Governance and Planning for 2017
- Now also Research Services!
  
- Access for university management
  - Senior team, Deans, HoD, Institute Directors

# Strategic Research Management Tool

---

- Business questions with end users
- **Awards**
  - Month and year, number and value by organisational unit Lead and contributing departments
  - Table and graphs
- **Applications**
  - Plus success rates
- **Impact**
  - Publications (but from when!?)
  - OA compliance
  - What else?!

# Strategic Research Management Tool

---

- Data definitions and data points with Research Services
- Data warehouse
- Tableau reporting
- Exception reports
- Data audits and cleansing
  
- Distribution delays
  - Different reporting criteria
  - Not enough good data



# Next steps

---

- Continue to produce manual reports
  - Continue to develop the tool and tableau reports
  - Senior management agreement to reporting criteria/years
  - Data cleansing continues
  - Impact reports!
- 
- Interrogate by individual for 2018?



## Becky Gordon

Research Support and Systems Manager

[b.gordon@lancaster.ac.uk](mailto:b.gordon@lancaster.ac.uk)

01524 592981