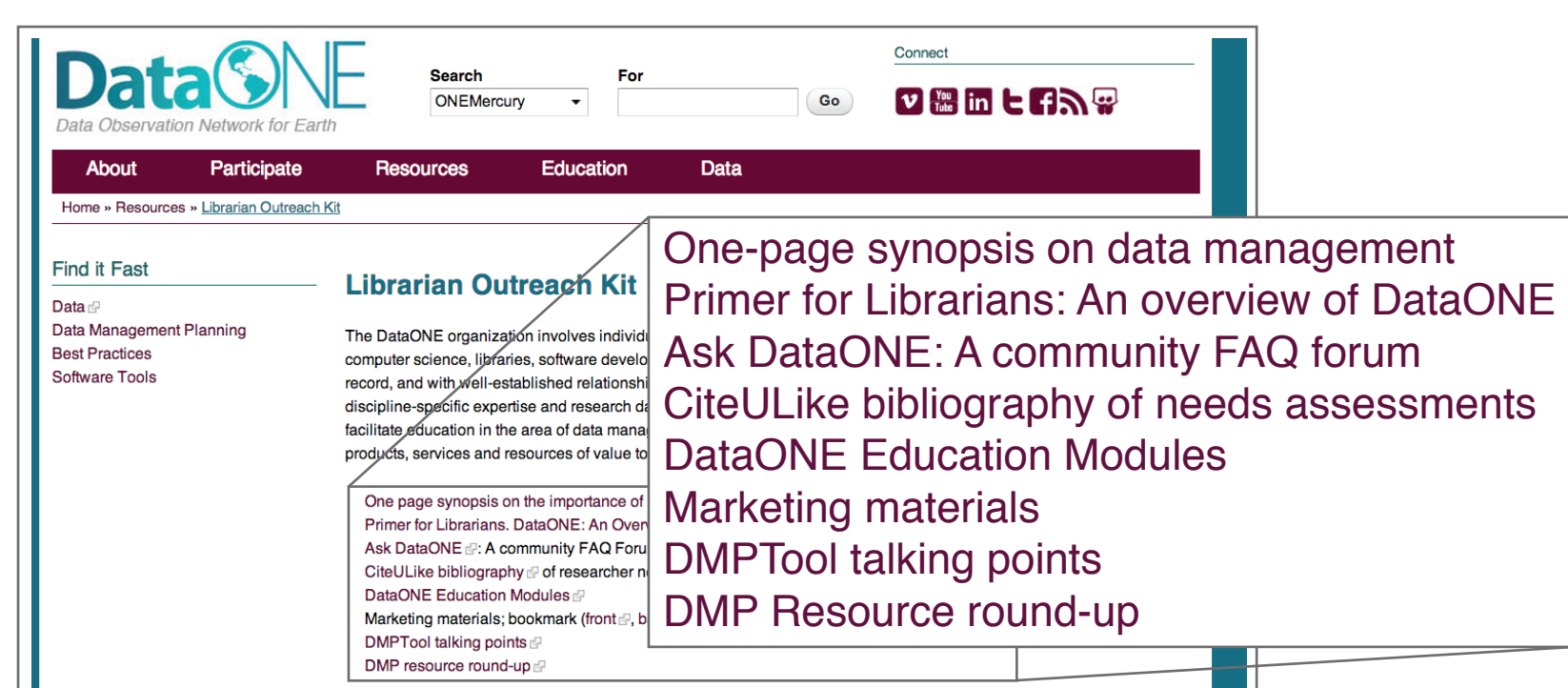


**In Brief:** DataONE is a project funded by the NSF, focused on federating existing data repositories in the earth and environmental sciences. The infrastructure being built is complemented by educational and outreach activities which inform the community about data stewardship. With the Librarian Outreach Toolkit, we introduce librarians to the DataONE project and the resources and tools they can use to fill a relevant and timely need for their communities, framing the use of these resources and tools in the context of the data life cycle. DataONE resources include instructional materials on best practices for data management, a best practices

database and software tools catalog, a research data management needs survey and assessment bibliography, and more. By participating in data management education and advocating for the use of best practices in data management, libraries and librarians can extend their historical mission of service and preservation for the academic community, and also promote best practices in data management to accomplish the aims of sharing, providing access to, and preserving data as effectively as possible. We also include in the toolkit information on how libraries and librarians can get involved with the DataONE community.

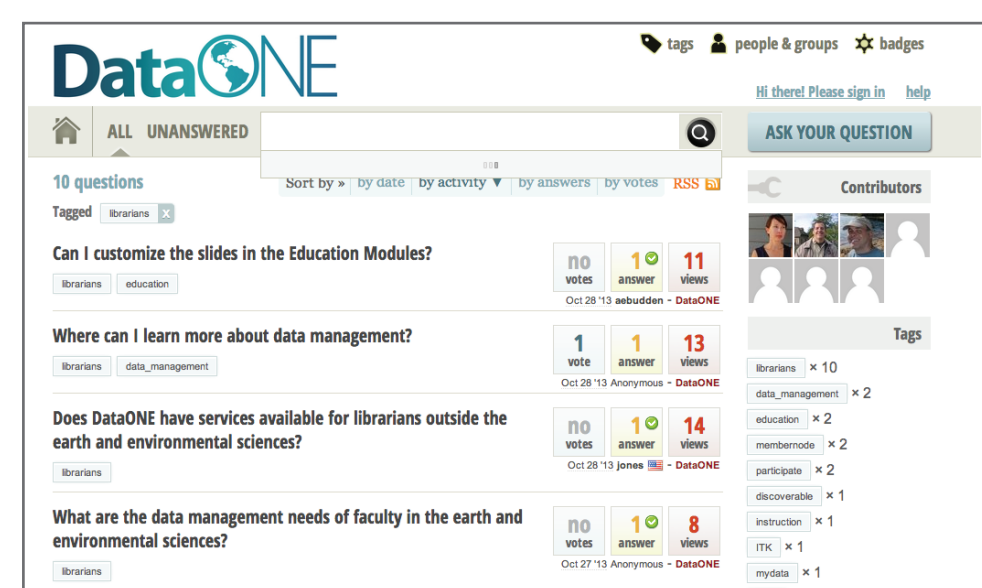
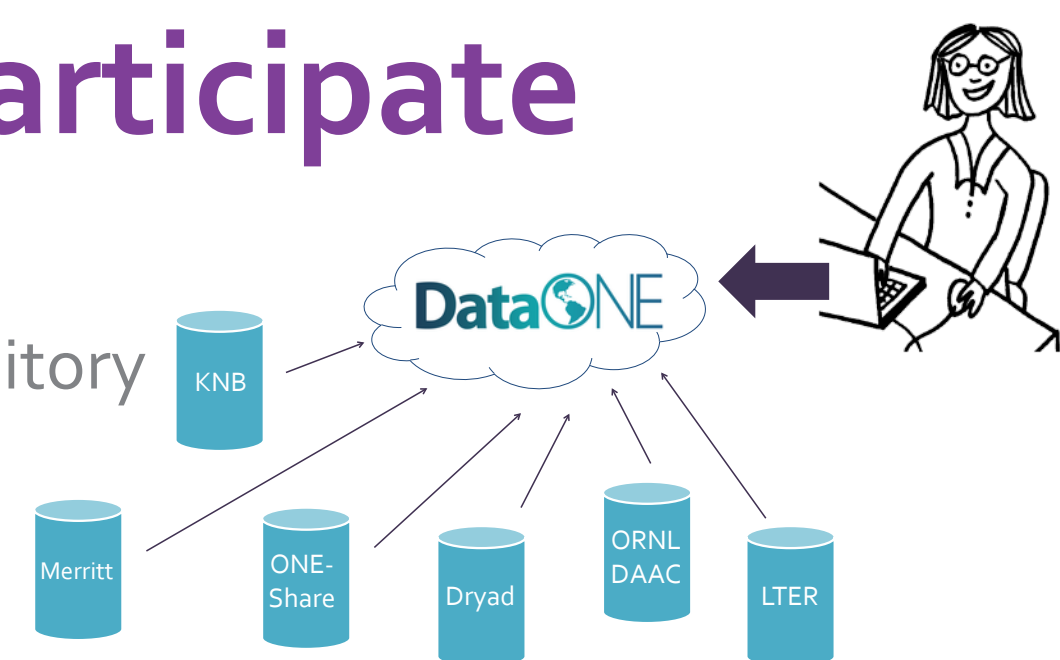
## Toolkit Contents

[www.dataone.org/for-librarians](http://www.dataone.org/for-librarians)



## How Libraries Can Participate

Advocate for Your Favorite Repository to Join DataONE



Contribute Q&A to [ask.dataone.org](http://ask.dataone.org)

Join the DataONE Users Group



2012 Users Group meeting in Madison, WI



Licensed under CC-BY-4.0

This work was supported by the National Science Foundation grant numbers 0753138 and 0830944.



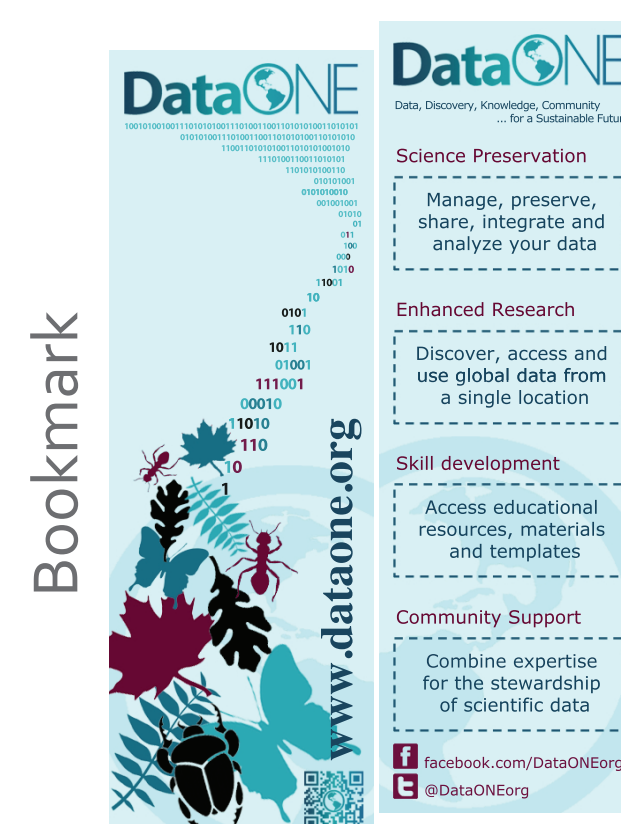
## DataONE Data Management Resources

Bibliography of Research Data Needs Assessments  
[citeulike](http://citeulike.org/) / RDMneeds

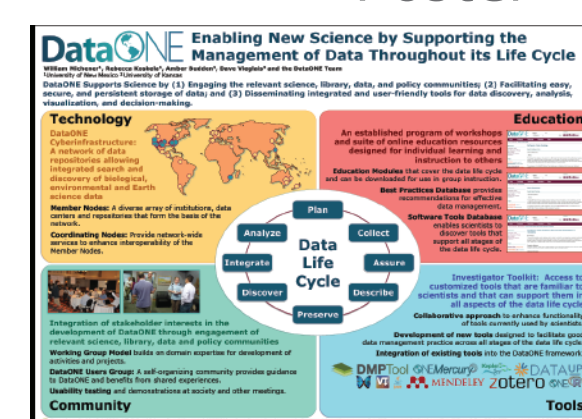
### Education Modules

- Lesson 01: Why Data Management
- Lesson 02: Data Sharing
- Lesson 03: Data Management Planning
- Lesson 04: Data Entry and Manipulation
- Lesson 05: Data Quality Control and Assurance
- Lesson 06: Data Protection and Backups
- Lesson 07: Metadata
- Lesson 08: How to Write Good Quality Metadata
- Lesson 09: Data Citation
- Lesson 10: Analysis and Workflows

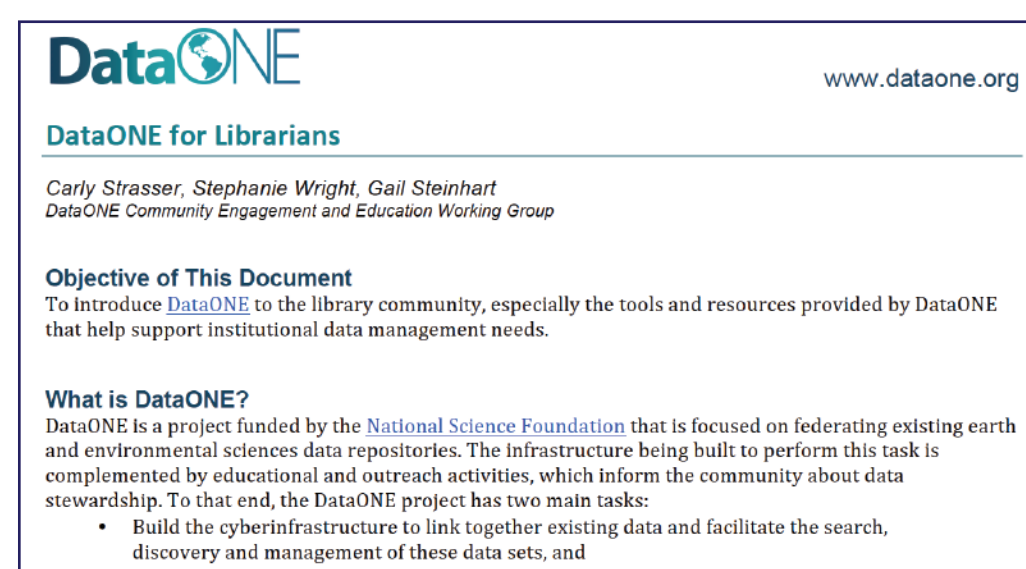
### Marketing & Outreach Materials



### Poster



### Primer for Librarians



### Software Tools Catalog

Descriptions of tools recommended for use by scientists and students, plus additional information and links to resources. Users can access tools within the database by selecting keywords or using free search.

### Best Practices Database

Provides recommendations on how researchers can effectively work with their data through all stages of the data lifecycle.

